



Mist Cooling Technology
2011 CATALOG
Misting Systems . Misting Fans . Fogging Systems



High Pressure Misting Pumps

When the engineers at Cool-Off put their name behind a product you can be sure that no shortcuts are ever taken. That said, we are proud to continue selling our Premier Edition Misting Pumps that are smaller, lighter, very cost competitive, and more user friendly than any competitive product on the market. Our 1000 PSI High Pressure pumps are quiet and vibration free.

For Misting Fan Systems THE PREMIER EDITION brings a myriad of valuable benefits at modest cost. Imagine starting your system as easily as pressing a remote button to open your garage door. We also include an anti-theft lock to secure it from vandalism. Now add in the pressure gauge, inlet solenoid valve, low pressure shut off, and a vented powder coated enclosure and you have the finest pump value on the market today.

Available in 1/8 GPM and 1/4 GPM you never have to worry about having an oversized pump with associated warranty issues



Premier Edition Pumps Features include:

- 1000 PSI High Pressure Pump
- Inlet Solenoid Valve & Pressure Switch
- 110 V, 60 Hz Motor
- Three position Power Switch (ON/OFF/REMOTE)
- Powder Coated Rust Proof Enclosure
- Liquid Filled Pressure Gauge
- Anti Theft Device
- Dual Chamber (Ultra Silent) Mechanism
- Remote Control & Clicker

Model:	PR1	PR2	PR5	PR13	PR20
GPM:	.125	.25	.50	1.30	2.00

MAXIMUM # NOZZLES @ 1000 PSI (70 BAR)

Pump Flow Orifice	.125	.25	.50	.75	1.0	1.3	2.0
.006"/.15mm	10	20	40	60	75	100	140
.008"/.20mm	5	10	20	30	40	50	70
.012"/.30mm	3	6	10	15	20	25	40
.015"/.40mm	2	4	7	10	15	20	30

Fogging/Misting Pumps

For larger systems or for fogging and misting line applications we are happy to again offer our open air misting pumps designed to produce 1/2 GPM, 1.0 GPM, or 2.0 GPM. Rugged and reliable, these pumps are sized to allow numerous options in multiple outlet fogging and perimeter misting applications.

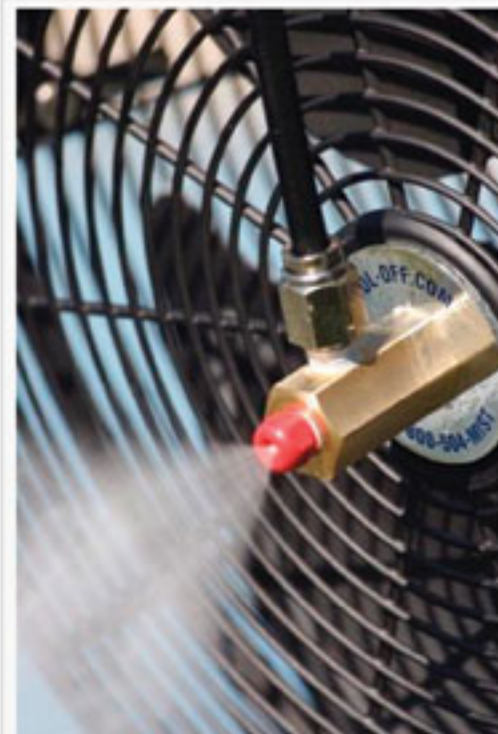


Misting Fans & Rings

Each Fan is Epoxy Coated (Preventing Rust) with a fully enclosed motor and adjustable 1, 2 or 3-Speed Settings.

- 18" Cool-Breeze Fans(WHT/BLK) F18W, F18B
- 24" Arctic-Breeze Fans F24 (Oscillating)
- 30" Ultimate-Breeze Fans F30 (Oscillating)

Model	Size	HP	Speed	RPM	CFM
F18W	18"	1/4	3	1570	6600
F18B	18"	1/4	3	1570	6600
F24	24"	1/3	2	1100	7800
F30	30"	1/4	3	1100	9300



18" Misting Fan

Stainless Steel Misting Rings

- 4 Nozzle Stainless Misting Ring, 15" Diameter.....SSR4
- 6 Nozzle Stainless Fog Ring, 15" Diameter.....SSR6



30" Misting Fan



Misting Ring Installed



Misting Ring

Misting Nozzles



Micro-Jet Nozzle w/Body



Micro-Jet Misting Fan Nozzles



Misting Tee

Micro-Jet Nozzles

- .006" Micro-Jet Nozzles.....RN1
- .008" Micro-Jet Nozzles.....GN2
- .006" Micro-Jet Replacement Nozzles...RRN
- .008" Micro-Jet Replacement Nozzles...GRN

Misting Nozzles w/body

- .006" Brass/Nickel Plated.....D1
- .008" Brass/Nickel Plated.....D2
- .012" Brass/Nickel Plated.....D3
- .015" Brass/Nickel Plated.....D4
- .006" Stainless Steel.....DS1
- .008" Stainless Steel.....DS2
- .012" Stainless Steel.....DS3
- .015" Stainless Steel.....DS4

Nozzle Orifice	Spray Angle	GPM@50Bar 700 PSI	GPM@70Bar 1000 PSI	GPM@83Bar 1200 PSI
.006"/.15 MM	50	.010	.013	.015
.008"/.20 MM	56	.013	.020	.024
.012"/.30 MM	63	.018	.028	.035
.015"/.40 MM	80	.025	.040	.050



Tahitian-Breeze Portable Misting Fan



Detailed Fan Specifications

Power	110 volt/60 Hz or 230 volt/50 Hz
Fan Output (3 speeds)	6825/7355/8060 cfm
Tank Size	10 gallons (38 liters)
Pump Working Pressure	1,000 psi (70 bar)
Fan Blade Size	18 inches
Nozzles	4 stainless steel with .006-inch stainless steel/ceramic nozzles and quick connect
Fan Adjustment Size	66 to 74 inches (170 to 190 centimeters)
Noise Level (High Speed)	44 dba
Oscillating Range	90 degrees
Fan Tilt Range	35 degrees
Fan Weight	88 pounds (40 kilograms)
Power Cord	10 feet, grounded
Packaging Dimensions	37x22x44 inches (88x56x112 centimeters)
Run Time	3 to 6 hours
Also Included	¾ inch female hose input, float valve shut off, 3 nozzle plugs and wheel lock



Patio Misting Kits



Misting Fan Conversion Kit

- 1/2" UV Resistant, Nylon Braided Hose
- 15" Diameter pre-fabricated mist ring
- 6" Inline Filter w/ 3/4" Male & Female Garden Hose Fittings
- 4 Swivel-Tec™ Rotating Tees
- 4 Micro-Jet 2™ Brass w/ Stainless Nozzles
- 10 feet of supply hose w/ Standard Hose & Spigot Female Connector
- 2-Way Splitter with Shutoff Valve
- Zip Ties
- Replacement Nozzles & Plugs
- (200 PSI) "Burst proof" Construction



10 ft Patio Misting Kit

- 1/2" UV Resistant, Nylon Braided Hose
- 10 feet of pre-fabricated mist line
- 6" Inline Filter w/ 3/4" Male & Female Garden Hose Fittings
- 6 Swivel-Tec™ Rotating Tees
- 6 Micro-Jet 2™ Brass w/ Stainless Nozzles
- 10 ft of supply hose w/ Standard Hose & Spigot Female Connector
- 2-Way Splitter with Shutoff Valve
- Easy Mounting Clips
- Replacement Nozzles & Plugs
- (200 PSI) "Burst proof" Construction



Patio Misting Kits



20 ft Patio Misting Kit

- 1/2 "UV Resistant, Nylon Braided Hose
- 20 feet of pre-fabricated mist line
- 6" Inline Filter w/ 3/4" Male & Female Garden Hose Fittings
- 11 Swivel-Tec™ Rotating Tees
- 11 Micro-Jet 2™ Brass w/ Stainless Nozzles
- 10 feet of supply hose w/ Standard Hose & Spigot Female Connector
- 2-Way Splitter with Shutoff Valve
- Easy Mounting Clips
- Replacement Nozzles & Plugs
- (200 PSI) "Burst proof" Construction



30 ft Patio Misting Kit

- 1/2 "UV Resistant", Nylon Braided Hose
- 30 feet of pre-fabricated mist line
- 6" Inline Filter w/ 3/4" Male & Female Garden Hose Fittings
- 16 Swivel-Tec™ Rotating Tees
- 16 Micro-Jet 2™ Brass w/ Stainless Nozzles
- 10 feet of supply hose w/ Standard Hose & Spigot Female Connector
- 2-Way Splitter with Shutoff Valve
- Easy Mounting Clips
- Replacement Nozzles & Plugs
- (200 PSI) "Burst proof" Construction



Mid Pressure Misting System Kit (DIY)



Each Kit includes:

- (1) 160 PSI Mid Pressure Booster Pump
- 15' of leader line hose as well as 50' of 1/4" Nylon Tubing (White). Tubing can be painted to match the color of walls if desired.
- Filtration system (6" In-line Hexa Phosphate Filter & Feeder Hoses)
- (20) Misting Tee Nozzles (.012") nozzle orifice
- All necessary hardware to install complete misting system;
Accessories Include - Tube Cutters, 1/4" Rubber Mounting Clamps, Slip-Lock Fittings - Tees, Unions, Elbows, End Plugs, Replacement Misting Nozzles and Nozzle Plugs)

The Mid Pressure Nylon Misting System Kit is the ultimate way to design a custom misting system that fits your lifestyle. The (DIY) Mid Pressure Kit also allows the end user to incorporate misting fans as well, which appeals to many homeowners trying to combine a misting system along the perimeter while placing stylish misting fans in the corners. Each one of these kits come with the misting industries newest and exciting booster pump, capable of powering up to (20) .012" misting nozzles. In doing so, we've created the ideal outdoor cooling solution for customers seeking high performance at an affordable price.

Each fully enclosed 160 PSI Booster Pump by Cool-Off incorporates upscale features such as a inlet solenoid valve & low pressure shut off switch, usually found only on high pressure pumps and combines them with a weatherproof hard plastic mould capable of withstanding heat, wind, rain, hail and snow. Since many people choose to use the water source closest to their patio, our engineers designed it to be small, powerful and most importantly whisper quiet. All Booster Pumps also come equipped with a built in wall mount on the back of every unit so your pump finally doesn't have to sit on the ground, extending the life of your investment.

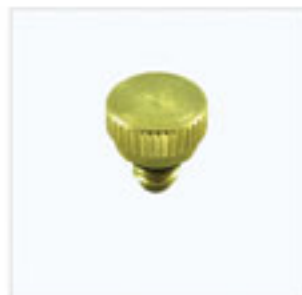
Set up is easy, just attach the pump unit & filter to your water source and insert the nylon tubing. Then simply cut the tubing with the provided cutters and insert our easy to use push lock misting tees while attaching the provided cushion clamps every 3-4 feet. Finally turn on the water and kick up your feet!

If you're ready to shift the climate this summer and enjoy (DIY) projects this is the kit for you!

Plugs, Nozzle Extensions, Risers, Fogging Heads

Nozzle Plugs

Brass Nozzle Plug.....NPB
Brass/Nickel Plated Nozzle Plug.....NPN



Nozzle Extensions

4" Nickel Plated Extension.....E4
8" Nickel Plated Extension.....E8
12" Nickel Plated Extension.....E12



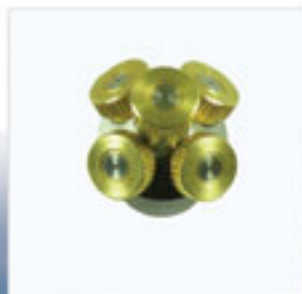
Flexible Risers

14" Flexible Riser & 1 Nozzle Fog Head w/nut.....T12
14" Flexible Riser & 3 Nozzle Fog Head w/nut.....T123



Fogging Heads

1 Nozzle Fog Head w/nut.....FH1
3 Nozzle Fog Head w/nut.....FH3
5 Nozzle Fog Head w/nut.....FH5



Fittings

Push to Connect (High Pressure)

Brass/Nickel Tee.....	FSLT
Brass/Nickel Elbow.....	FSLE
Brass/Nickel Union.....	FSLU
Brass/Nickel Nozzle Union (w/o nozzle).....	NOZU
Brass/Nickel End Plug.....	NOZP
Brass/Nickel Male Adaptor 3/8" x 1/4".....	FSLA



Compression

Brass Tee.....	CBFT
Brass Elbow.....	CBFE
Brass Union.....	CBFU
Brass Nozzle Union (w/o nozzle).....	CBFN
Brass End Cap	CBFP
Brass Male Adaptor 3/8" x 1/4".....	CBFA
Stainless Steel Tee (Double Ferrule).....	CSFT
Stainless Steel Elbow (Double Ferrule).....	CSFE
Stainless Steel Union (Double Ferrule).....	CSFU
Stainless Steel End Cap(Double Ferrule).....	CSFP



Tubing

Nylon/Stainless Steel

Flexible Nylon Tubing(100 Ft. Rolls)	
Avail. Colors: White.....	N12W
Black.....	N12B
Flexible Nylon Tubing(50 Ft. Rolls)	
Avail. Colors: White.....	N12W5
Black.....	N12B5
Stainless Steel Tubing (10 Ft. Lengths, 24" Spacing).....	SS10



Water Filtration



Housing & Replacement Filters

- 5" Blue Filter Housing..... SLIM5
- 10" Blue Filter Housing..... SLIM10
- Replacement 5" Filter..... P5
- Replacement 10" Filter..... P10
- Replacement 10" Anti-Scale Cartridge..... P106
- Inline Hexa Phosphate..... SLIM6
- 6" Filter w/ 3/4" Male & Female
Garden Hose Fittings
(Low & Mid Pressure Systems)



Pedestal Misting Fans



Single Unit



3 units

Limited Warranty

Cool-Off ® LLC warrants its products to be free of defects in material and workmanship for a period of:

One Year on all Pumps & Fans

3 Year Warranty

On all Stainless Steel Misting Lines, Mist Rings, Brass Fittings & High Pressure Tubing

No merchantability or other warranty, expressed or implied is made within the warranty period. Cool-Off ® LLC is not liable for damages or any expenses incurred through the use of its products. The warranty will be considered violated if the products are used for other applications or purposes other than the criteria described in each product's guidelines for use.

Nozzles and Filters are excluded from this warranty.

DISTRIBUTED:

